

TOWN OF PULASKI
VIRGINIA

CONSTRUCTION PLANS
FOR

COMMERCE STREET BRIDGE

BIDS RECV 9/27/49
AWARDED — TRINKLE DOBYNS

SUBMITTED: *John B. Mc Gaughy*
CHIEF ENGINEER

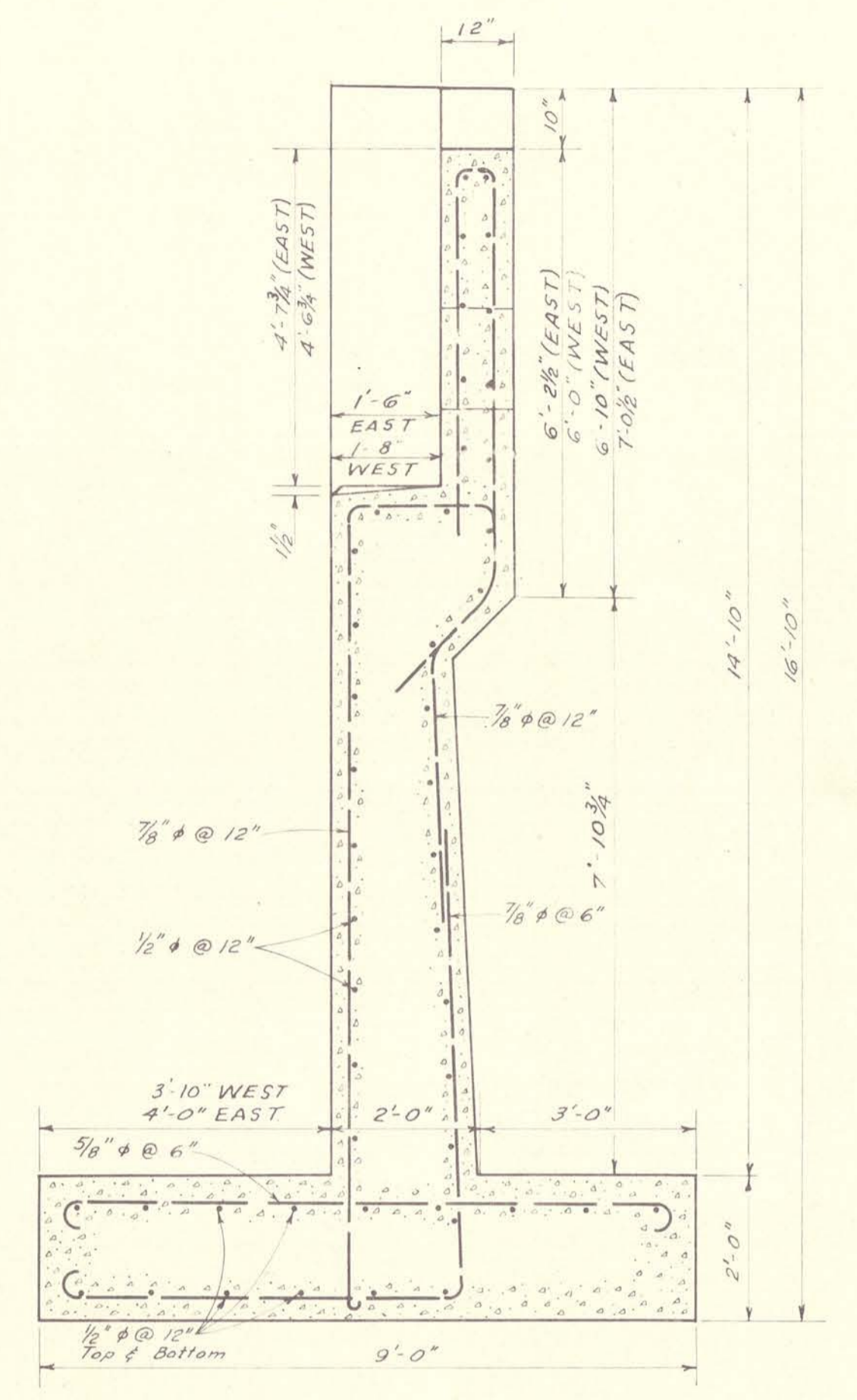
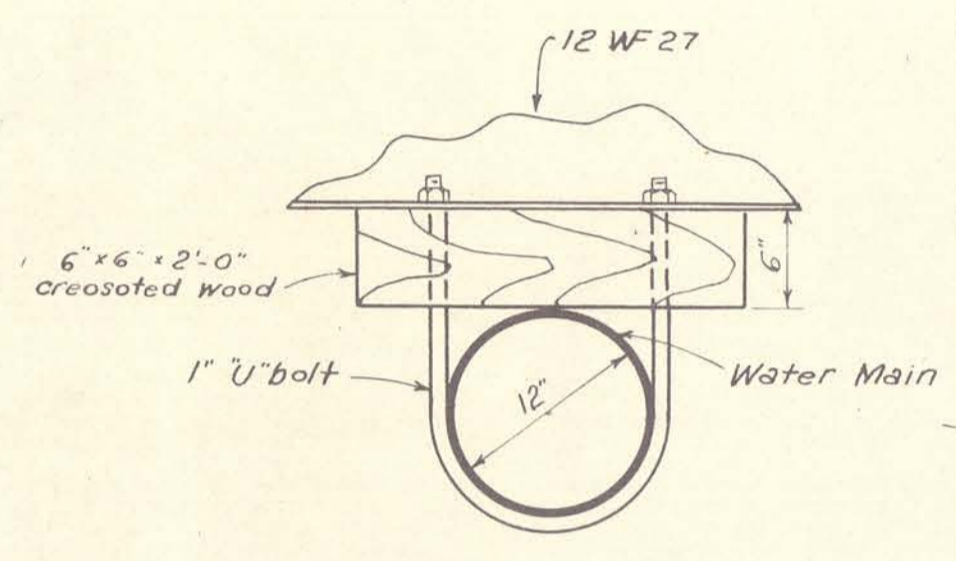
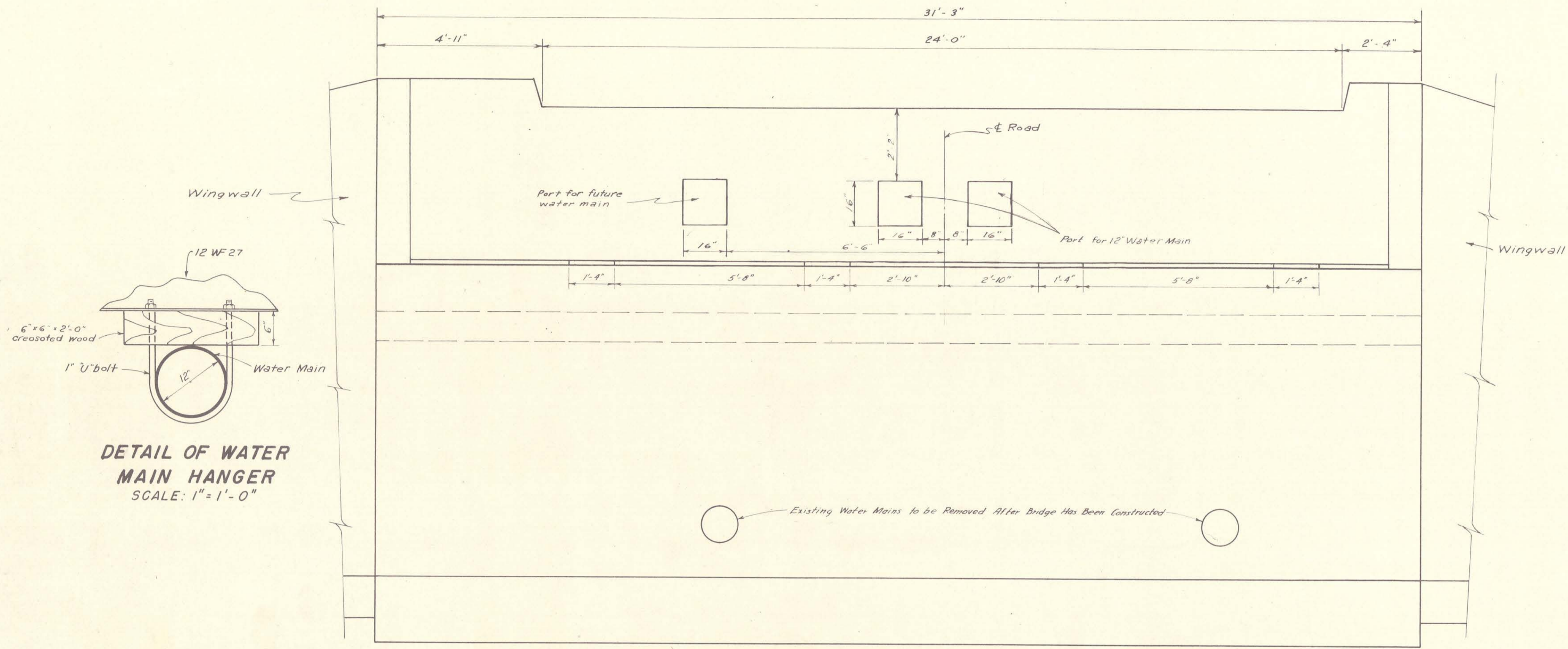
Date: *June 15, 1949*

LUBLIN, McGAUGHY & ASSOCIATES
Consulting Engineers
Norfolk Virginia

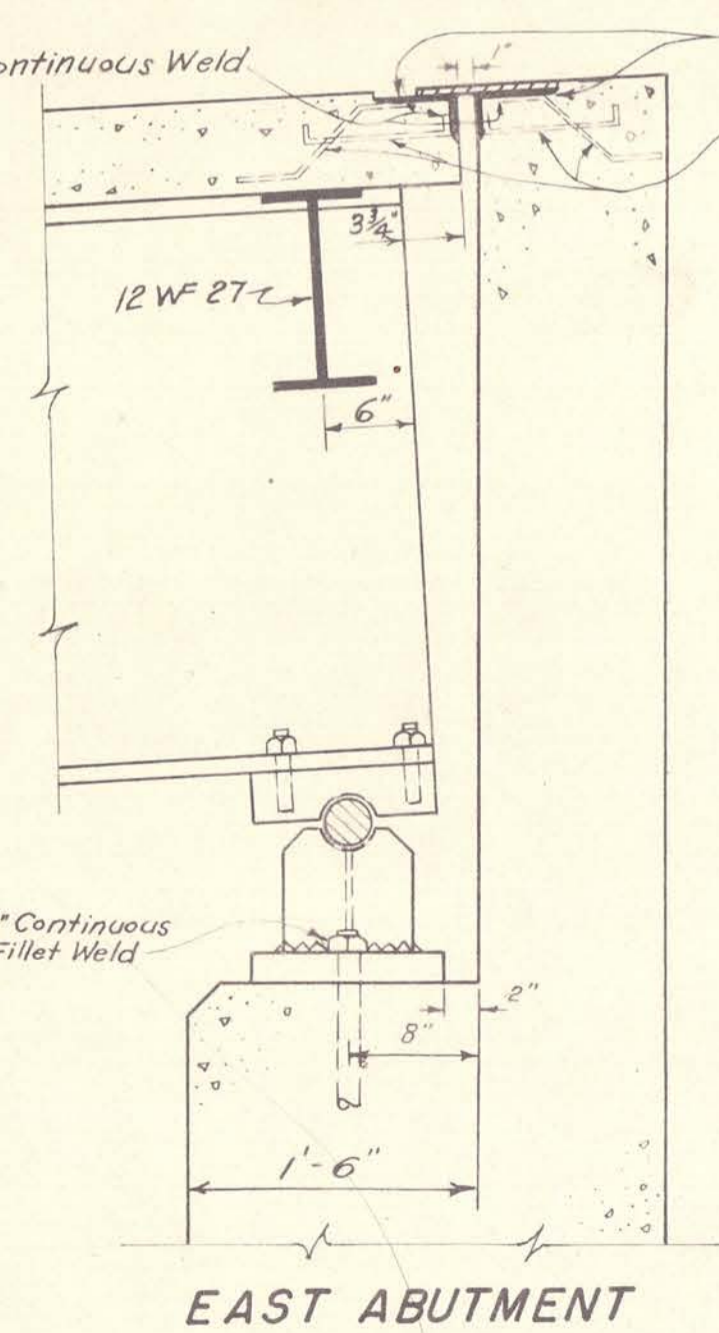
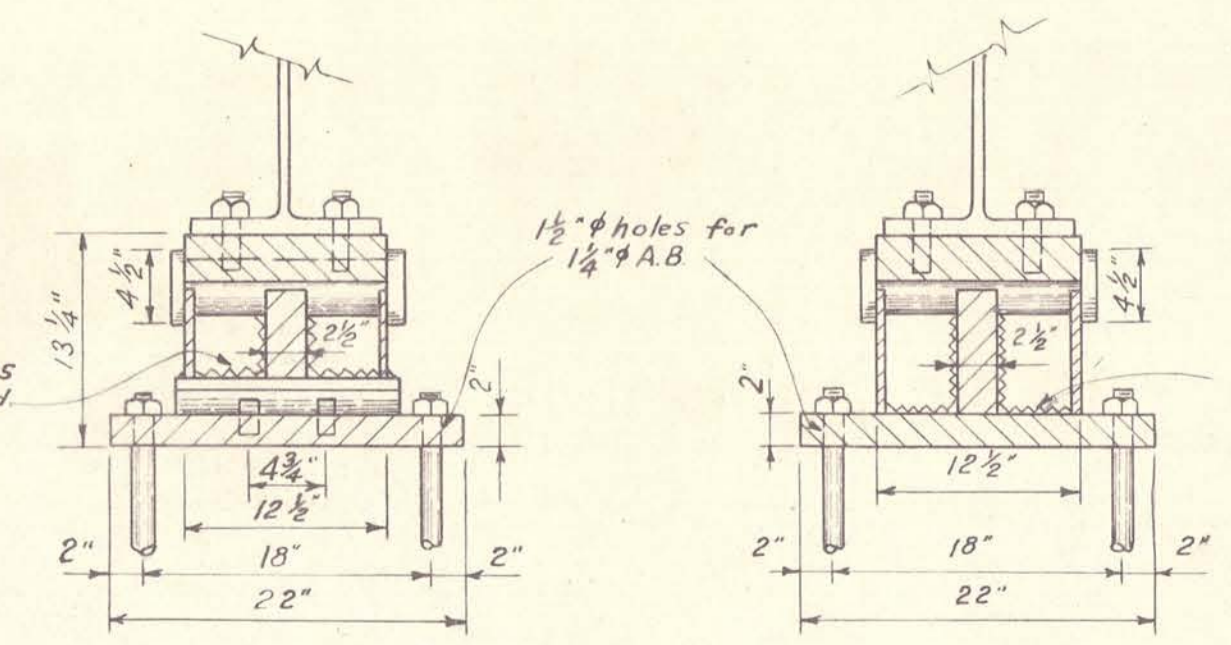
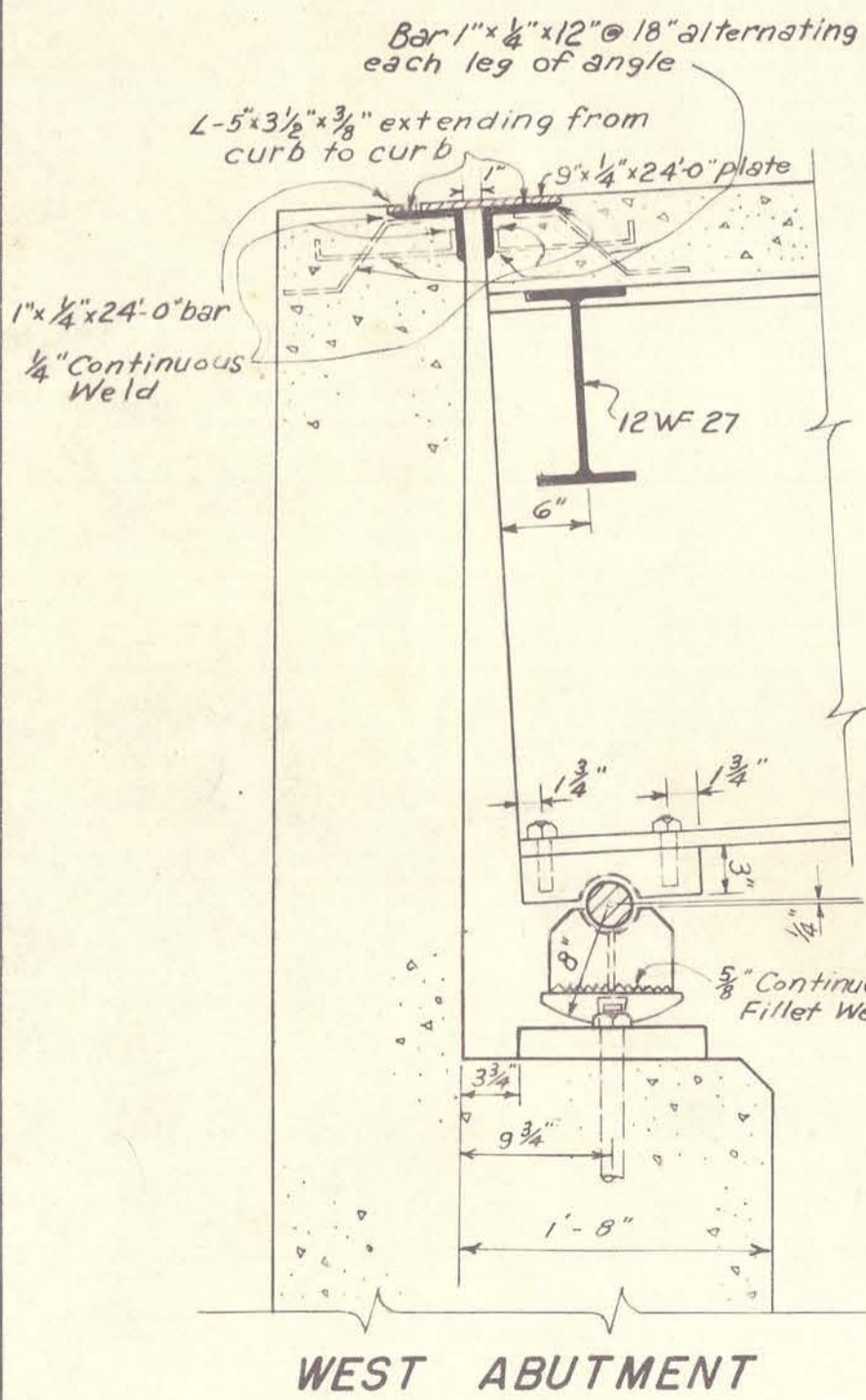
APPROVED: *[Signature]*
TOWN MANAGER

Date: *July 12, 1949*

22-*[Signature]*
SHEET 1 OF 8



- MATERIAL FOR ONE EXPANSION SHOE**
- 4-1" φ Turned Bolts
 - 1-Top Slab 12"x3"x12 1/2"
 - 1-3" φ Pin
 - 1-10" WF # 39# (Split Web)
 - 1-12 8"x2 1/2"
 - 1-Rocker Slab 9"x2 1/2"x14"
 - 1-Masonry R 12"x2"x22" for 170# Girder, 12"x2 1/2"x22" for 150# Girder
 - 2-1 1/2" x 2 1/2" Dowels
 - 2-1 1/2" x 21" Swedged Anchor Bolts
- MATERIAL FOR ONE FIXED SHOE**
- 4-1" φ Turned Bolts
 - 1-Top Slab 12"x3"x12 1/2"
 - 1-3" φ Pin
 - 1-10" WF # 39# (Split Web)
 - 1-12 8"x2 1/2"
 - 1-Masonry R 12"x2"x22" for 170# Girder, 12"x2 1/2"x22" for 150# Girder
 - 2-1 1/2" x 21" Swedged Anchor Bolts

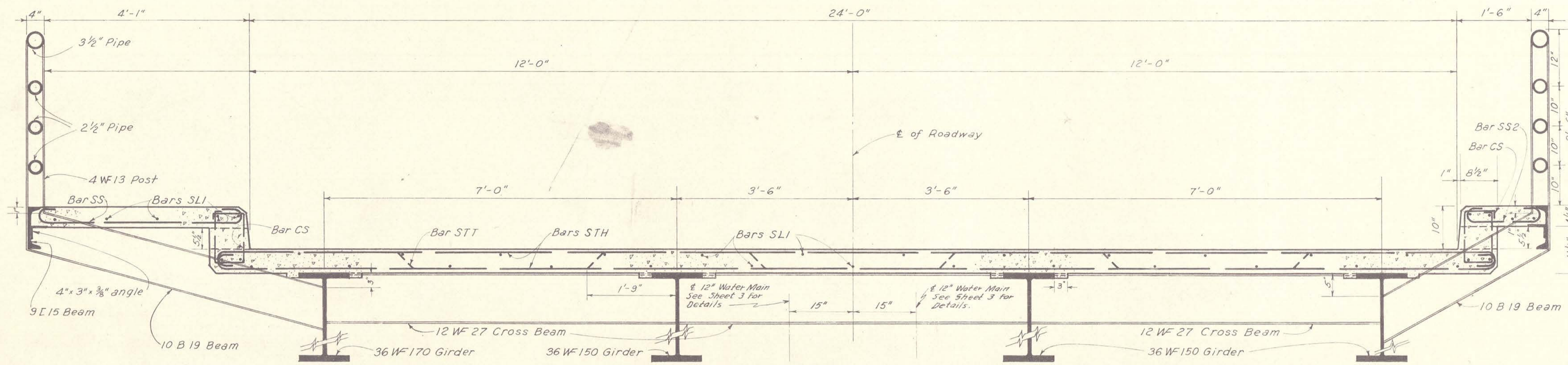


- GENERAL NOTES:**
- Roadway: 24'-0" Clear. One 4'-0" Sidewalk. Capacity H10-44 loading.
 - Specifications: General Virginia Department of Highways Specifications, 1947. Design: A.A.S.H.O. Specifications for Highway Bridges, 1944.
 - All concrete shall be class "A"
 - Foundations shall be approved by the Engineer. If necessary to provide for proper depths of foundations, adjustments shall be made in footings. Footings shall be carried to solid rock.
 - Excavation shall be unclassified.
 - Welds shall be made as specified by the American Welding Society Specifications for Fusion Welding of Highway and Railroad Bridges.
 - All rivets to be 7/8" φ.
 - B.M. Top of north wing wall of east abutment of railroad bridge. Elev. 1948.16.
 - The contractor will cooperate with the Town of Pulaski, Va. so that the utilities can be adjusted or relocated in the minimum amount of time and at a minimum of cost.
 - All structural members and bridge rail shall be painted in accordance with paragraph 413 Virginia Department of Highways Specifications.
 - Camber will be secured by gaging beams cold; 3" Camber for 69'-6 1/2" girder.
 - Reinforcing bar splices shall be at least 34 diameters.
 - All chamfers shall be 1/2" unless otherwise designated.
 - All utilities which interfere with construction are to be adjusted by the owners at their expense. After the utilities have been adjusted and marked, the contractor shall be responsible for any damage to the utilities that may occur.
 - Slide plates on road of expansion joints will be constructed as shown in detail of joint of west abutment. Sidewalk and curb joints will be filled with mastic.
 - Mechanical joint pipe for the two 12" water lines will be furnished by the Town of Pulaski, Va. and shall be installed by the contractor. The pipe hangers shall be furnished and installed by the contractor. Compensation for the furnishing of the pipe hangers and installation of hangers and pipe shall be included in the unit price bid for the "Bridge Complete."
 - The Contractor shall provide adequate protection to prevent damage to existing water mains.

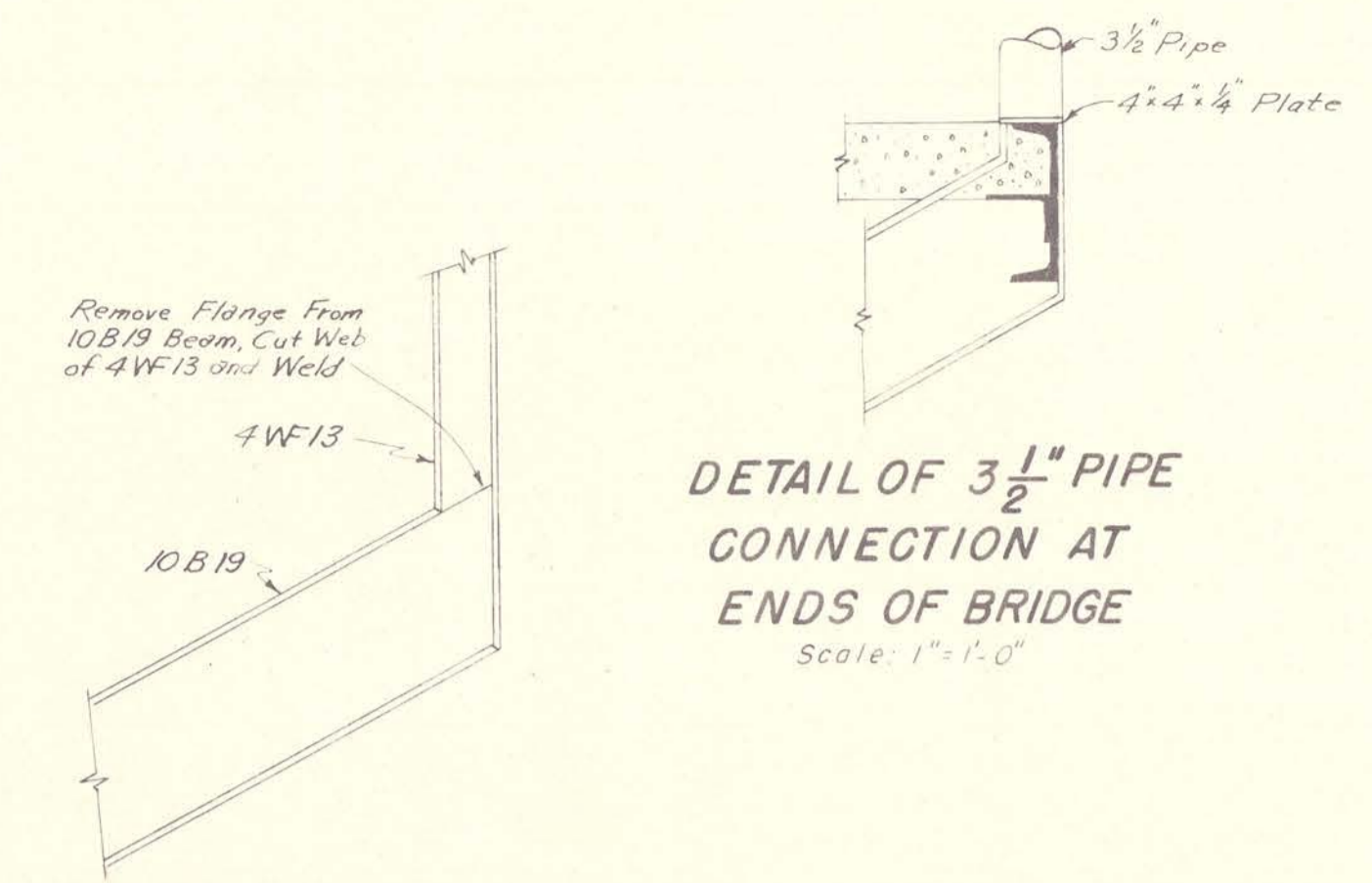
COMMERCE STREET BRIDGE
ABUTMENT & DETAILS
SHEET 2 OF 8

LUBLIN, McCAUGHY & ASSOC.
CONSULTING ENGINEERS
NORFOLK, VA.

22-e

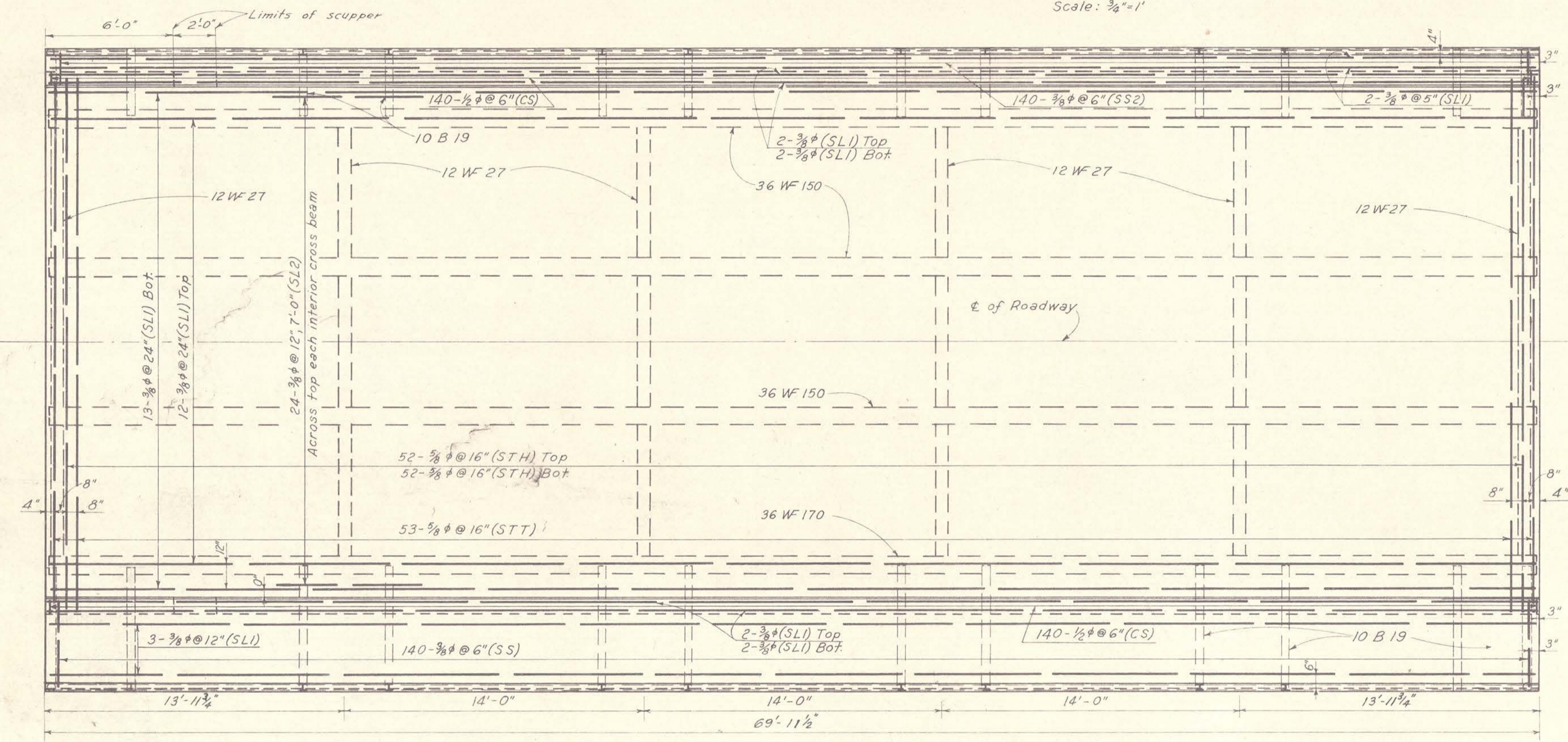


TYPICAL TRANSVERSE SECTION
Scale: 3/8"=1'

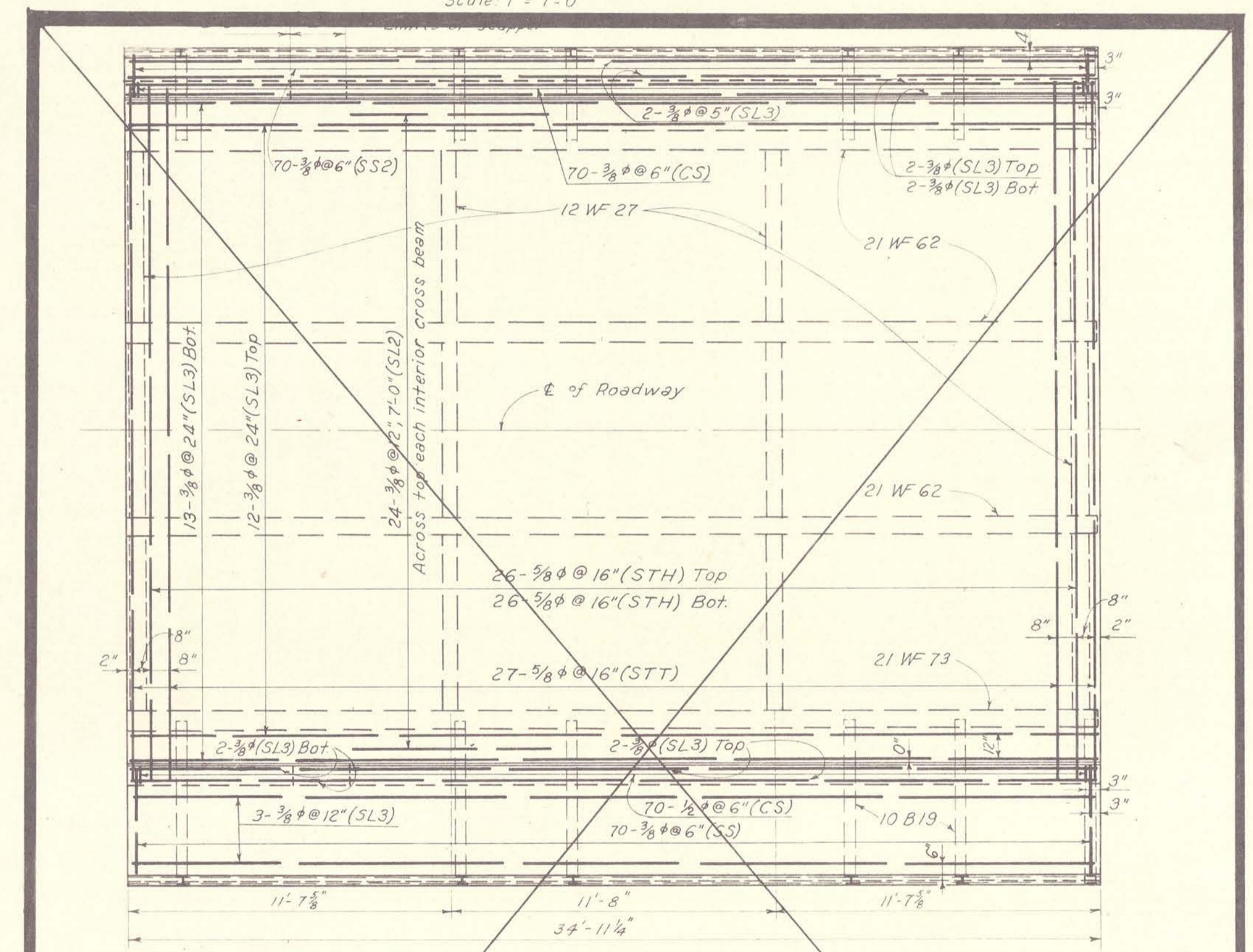


DETAIL OF CANTILEVER BEAM AND POST CONNECTION
Scale: 1"=1'-0"

DETAIL OF 3 1/2" PIPE CONNECTION AT ENDS OF BRIDGE
Scale: 1"=1'-0"

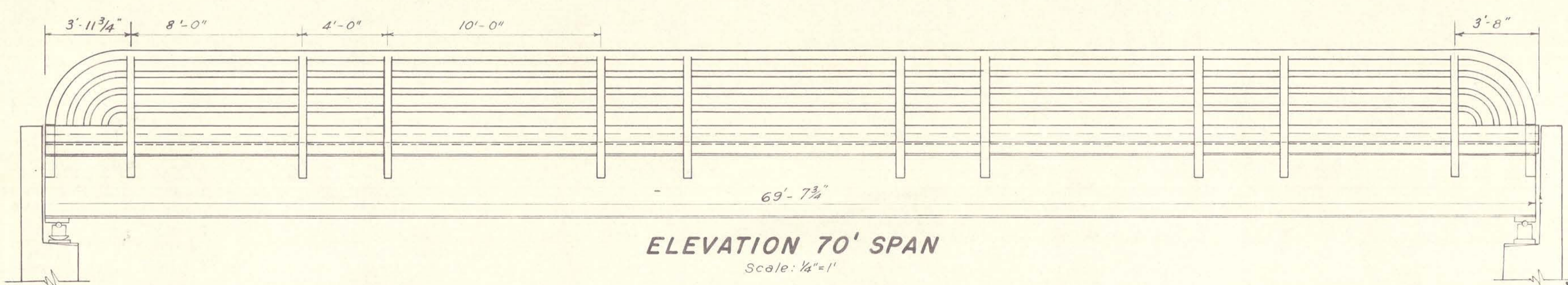


PLAN 70' SPAN
Scale: 1/4"=1'

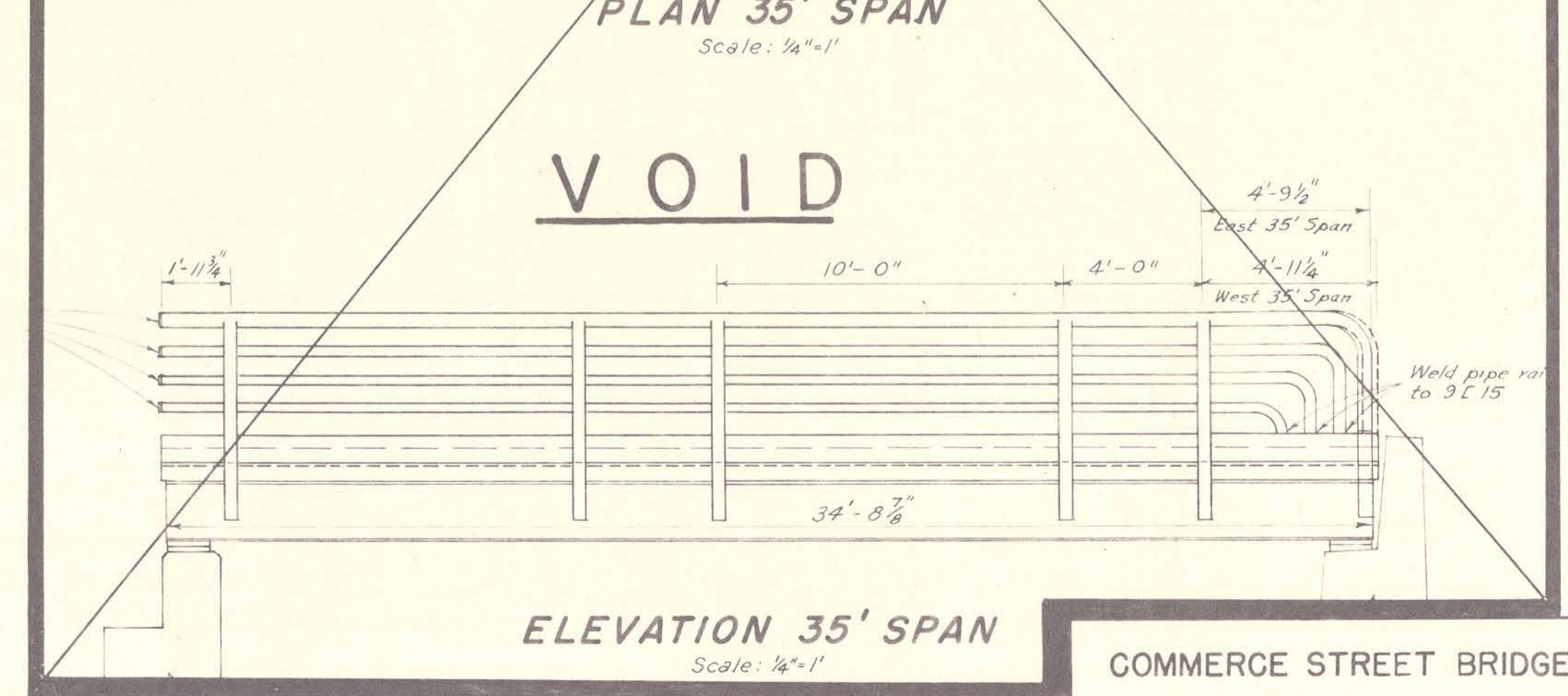


PLAN 35' SPAN
Scale: 1/4"=1'

VOID



ELEVATION 70' SPAN
Scale: 1/4"=1'

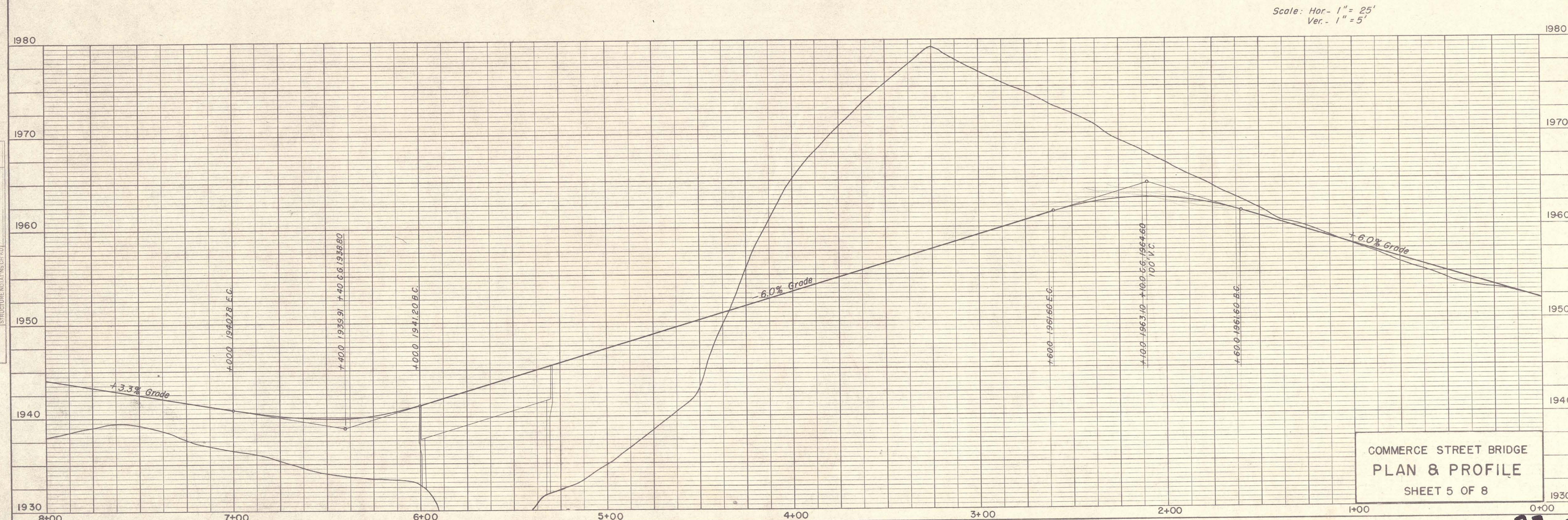
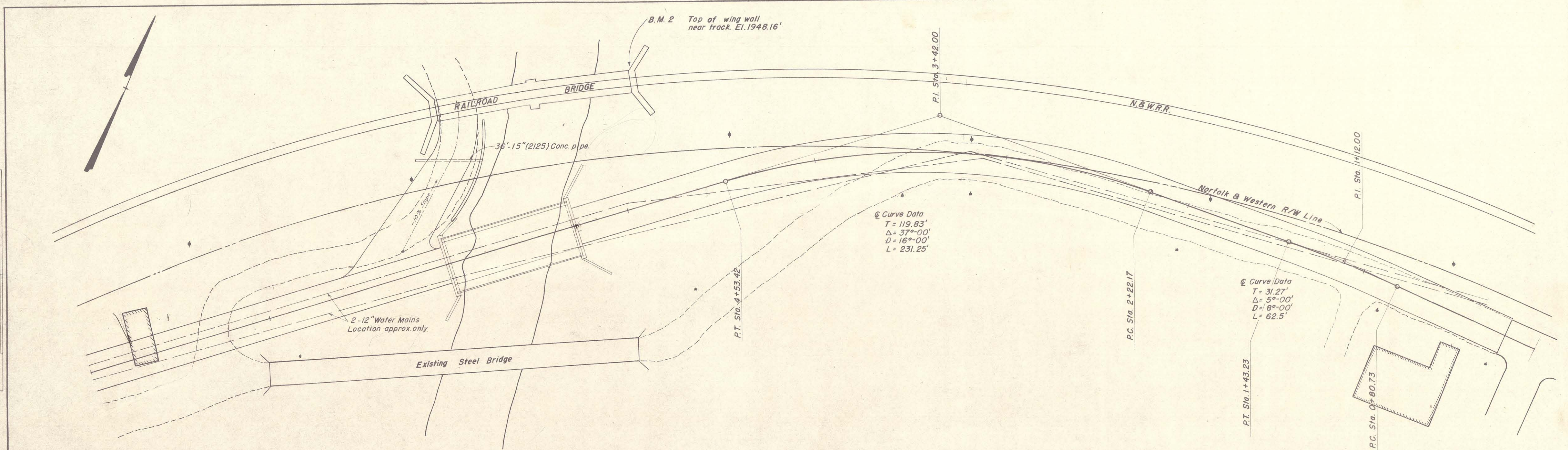


ELEVATION 35' SPAN
Scale: 1/4"=1'

LUBLIN, McGAUGHY & ASSOC.
CONSULTING ENGINEERS
NORFOLK, VA.

PLAN SURVEYED BY DATE
 PLOTTED BY
 NOTE BOOK NO.
 PART OF WAY CHECKED

PROFILE SURVEYED BY DATE
 PLOTTED BY
 NOTE BOOK NO.
 GRADES CHECKED
 B.M.'S NOTED
 STRUCTURE IN PLAN CHECKED

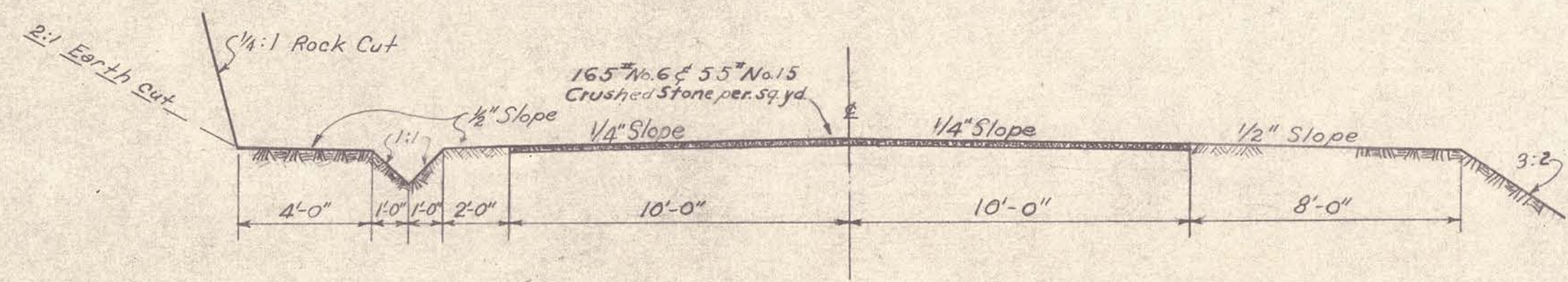


COMMERCE STREET BRIDGE
 PLAN & PROFILE
 SHEET 5 OF 8

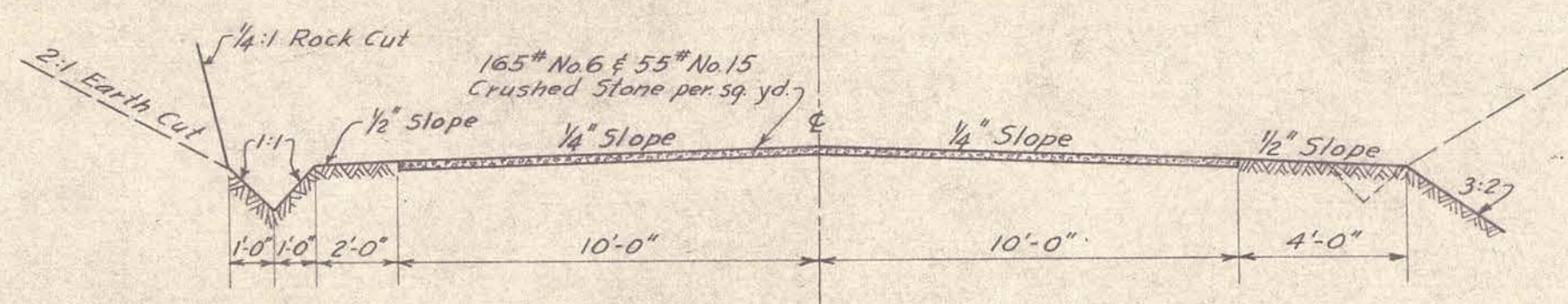
DATE _____
 BY _____
 SURVEYED _____
 PLOTTED _____
 ALIGNMENT CHECKED _____
 RT. OF WAY CHECKED _____
 PLAN
 NOTE BOOK NO. _____

DATE _____
 BY _____
 SURVEYED _____
 PLOTTED _____
 GRADES CHECKED _____
 B. M. NOTED _____
 STRUCTURE NOTATIONS CH-KC
 PROFILE

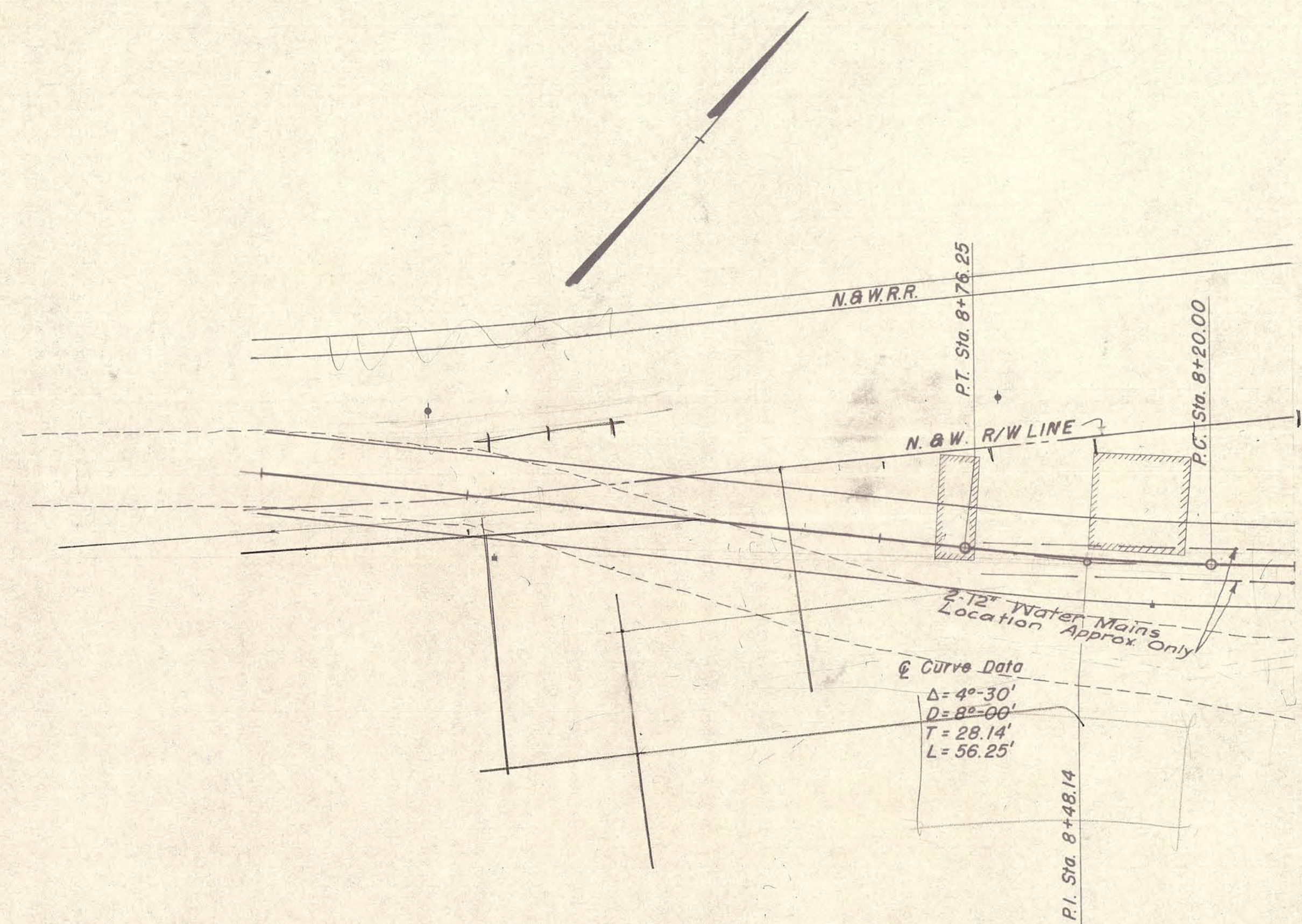
LUBLIN, MCGAUGHY & ASSOC.
 CONSULTING ENGINEERS
 NORFOLK, VA.



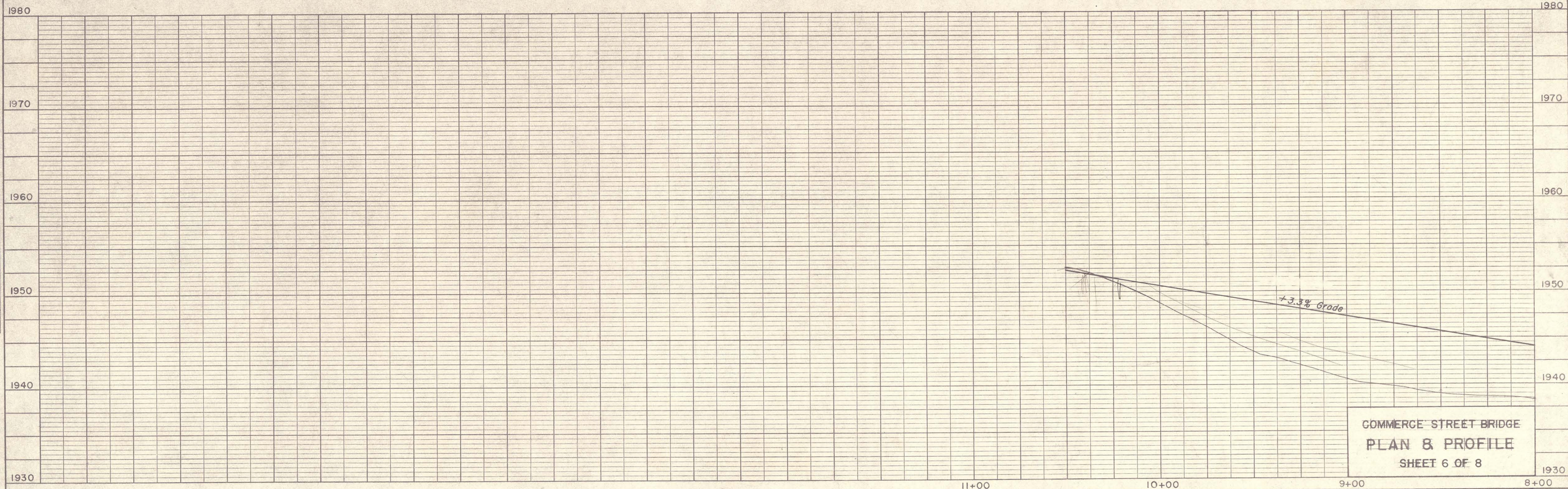
TYPICAL SECTION
 From Sta. 3+75 to 10+50
 Scale: 1/4"=1'-0"



TYPICAL SECTION
 From Sta. 0+00 to 3+75
 Scale: 1/4"=1'-0"

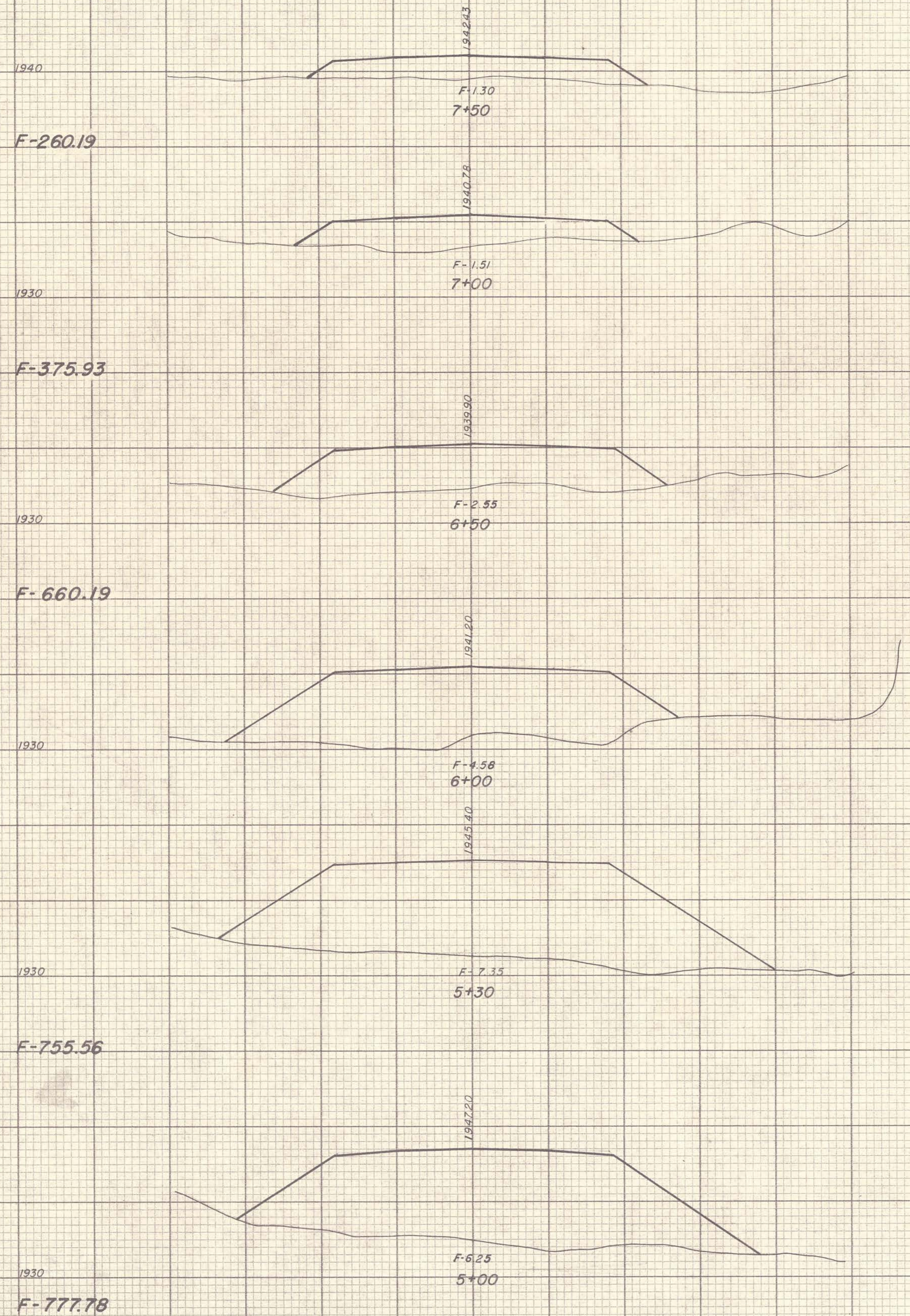


Scale: Hor. - 1" = 25'
 Ver. - 1" = 5'



COMMERCE STREET BRIDGE
 PLAN & PROFILE
 SHEET 6 OF 8

LUBLIN, McGAUGHY & ASSOC.
CONSULTING ENGINEERS
NORFOLK, VA.



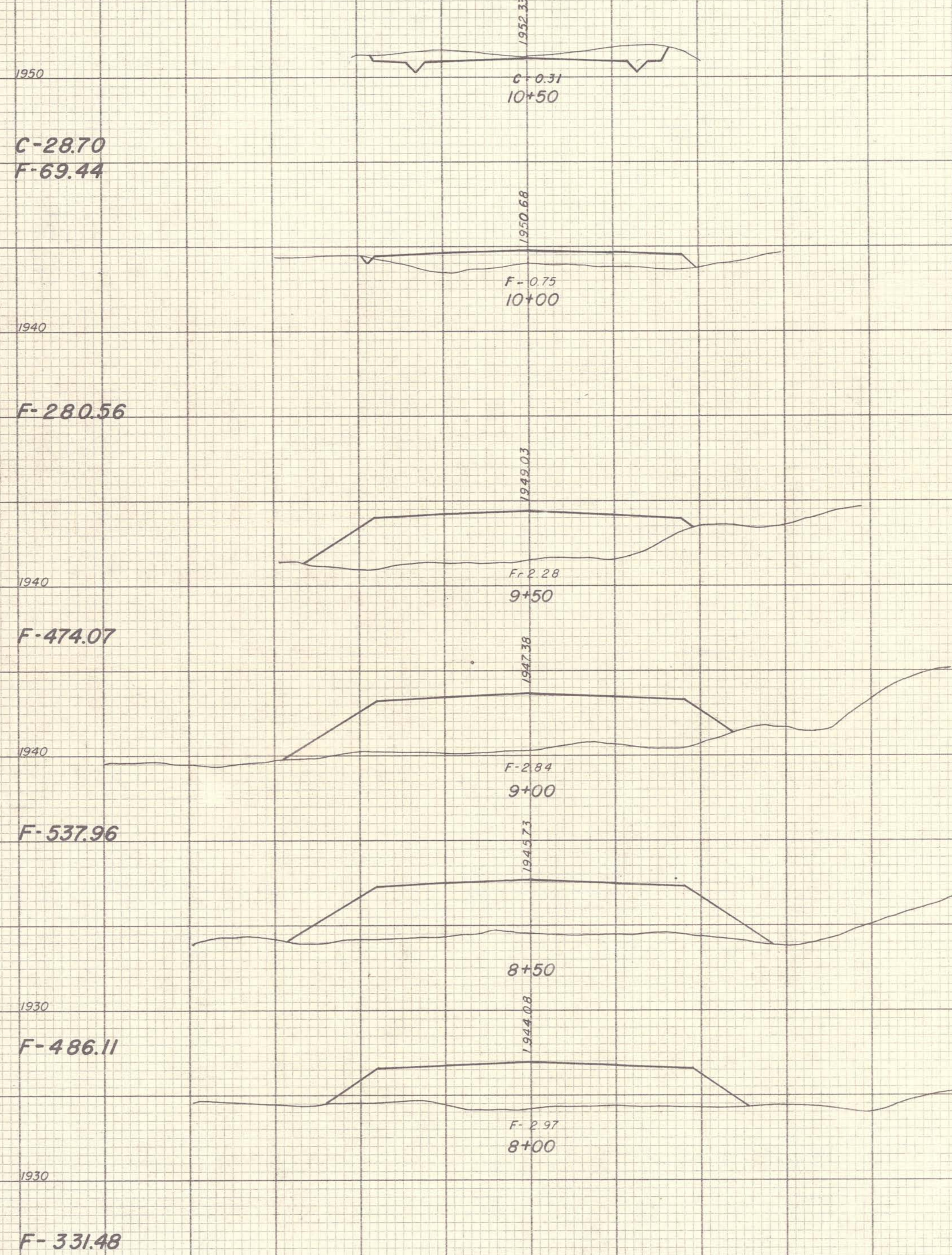
F-260.19

F-375.93

F-660.19

F-755.56

F-777.78



C-28.70
F-69.44

F-280.56

F-474.07

F-537.96

F-486.11

F-331.48

Scale: Hor. & Ver. 1" = 10'

COMMERCE STREET BRIDGE
CROSS SECTION

SHEET 8 OF 8

22-c

PRINTED IN U.S.A.
ON 100% RECYCLED PAPER MADE IN U.S.A.

PERFECT CROSS SECTION
10 X 10 - ONE INCH
ENGINEERS

PRINTED IN U.S.A.
ON 100% RECYCLED PAPER MADE IN U.S.A.

PERFECT CROSS SECTION
10 X 10 - ONE INCH
ENGINEERS

LUBLIN MCGAUGHY & ASSOC
CONSULTING ENGINEERS
NORFOLK, VA.

C-307.41

1970

1962.14
C-2.66
2+50

C-72.22

1960

1963.91
C-.66
2+00

C-12.96
F-16.67

1960

1961.00
C-12
1+50

C-2.78
F-51.85

1950

1959.00
C-.01 F-18
1+00

C-0.93
F-22.22

1950

1955.00
C-.01 F-38
0+50

C-0.30
F-6.37

1950

1951.50
C-.01 F-10
0+25

1953.02
C-.01 F-33
0+17

C-520.46
F-218.98

1950

1950.20
C-.01 F-2.15
4+50

C-920.33

1970

1963.50
C-5.10
3+95

C-1011.11

1970

1956.20
C-3.95
3+50

C-706.48

1970

1959.20
C-4.97
3+00

Scale: Hor. & Ver. 1"=10'

COMMERCE STREET BRIDGE
CROSS SECTION
SHEET 7 OF 8

22-c

EUGENE DIEZGEN CO. PERFECT CROSS SECTION. PRINTED IN U.S.A. LUBLIN MCGAUGHY & ASSOC. CONSULTING ENGINEERS. NORFOLK, VA. PRINTED IN U.S.A.